

HemCon Patch® PRO

Where Bleeding Stops™

Hemostatic dressing for the external bleeding control

HemCon Patch® PRO is a hemostatic dressing for the external, temporary control of severely bleeding wounds intended for emergency use.

The **HemCon Patch® PRO** also controls bleeding in patients following hemodialysis and is indicated for the control of bleeding from the skin at percutaneous needle access, vascular access and percutaneous catheter access sites.

HemCon Patch® PRO is fabricated from chitosan, a naturally occurring, biocompatible polysaccharide.

Stops arterial bleeding

- Post catheterization procedures
- Diagnostic or interventional radiology
- Electrophysiology lab procedures
- Following hemodialysis



Features:

- Non invasive
- Quick and reliable hemostasis
- Antibacterial barrier
- Flexible and contouring design
- Time saving
- Cost effective
- Contains no human clotting factors
- Maximize limited staff

HemCon Patch® PRO

Ref. no.	Specification	Qty/box
1004	HemCon Patch® PRO 4 cm x 4 cm	10

Manufactured by HemCon Medical Technologies, Inc. - Portland, OR - USA

Contact/Place order: Mermaid Medical A/S · Frydensbergvej 25 · DK-3660 Stenløse · www.mermaidmedical.com · customer@mermaidmedical.com



Denmark
P +45 47 10 85 70
F +45 47 10 85 71

Sweden
P +46 31 755 41 28
F +46 31 755 45 99

Finland
P +358 923 113238
F +358 923 113239

Norway/Iceland
P +47 21 53 88 94
F +47 21 53 88 95

United Kingdom
P +44(0)1704 560493
F +44(0)1704 551182

Spain
P +34 9253 33159
F +34 9253 33159
customer@mermaidmedical.es

Netherlands
P +31 314 63 2070
F +31 314 63 1685
info@mermaidmedical.nl

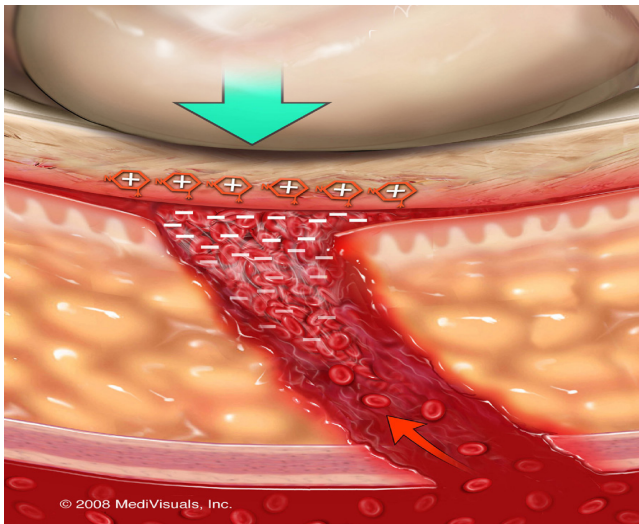
Germany
P +49 40 8518665-0
F +49 40 8518665-1
info@mermaidmedical.de

HemCon Patch® PRO

INSTRUCTIONS FOR USE

The **HemCon Patch® PRO** is a hemostatic dressing for the external, temporary control of severely bleeding wounds intended for emergency use. The **HemCon Patch® PRO** also controls bleeding in patients following hemodialysis and is indicated for the control of bleeding from the skin at percutaneous needle access, vascular access and percutaneous catheter access sites.

HemCon Patch® PRO Bandages are easy to use



Hemostasis is achieved after sheath removal following catheterization, interventional radiology, and electrophysiology procedures with the HemCon Patch® PRO and digital pressure.

1.

- Remove sheath following hospital protocol.
- Allow a small amount of blood, approximately the size of a nickel, to surround the puncture site.
- **DO NOT** cleanse the puncture site or moisten with saline solution. Blood is required to facilitate the unique adhesion process.

2.

- With the printed side facing up, place the HemCon Patch directly on the puncture site.
- Hold digital pressure across the entire vascular access tract until bleeding is controlled.

3.

- Patch will have adhered where blood was present.
 - If it did not adhere, but hemostasis was achieved, patch can be held in place with an appropriate dressing to act as an antibacterial barrier.
 - If it did not adhere, and hemostasis was not achieved, repeat steps 1 and 2 with new patch.
- After bleeding has stopped, secure the HemCon Patch with an appropriate dressing.
- Recheck the wound for potential bleeding as necessary.

NOTE:
 These guidelines should not supercede clinical judgment based on the medical condition of the individual patient.
 This is a non-invasive hemostatic solution not intended to be a direct substitute for mechanical wound closure devices.

Removal Instructions

- The HemCon Patch can remain in place up to 48 hours.
- To remove the patch, irrigate with sterile water or saline while gently pulling up on the corner of the patch.
- Instruct discharged patients to soak the patch in the shower, and then gently peel off the patch.