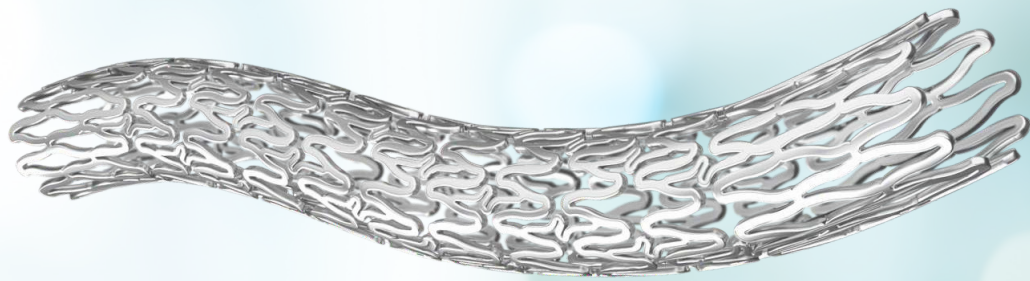




# Peripheral Vascular Catalogue



# PERIPHERAL VASCULAR

Our Peripheral Vascular product offering is dedicated to the treatment of vascular conditions including peripheral arterial diseases. We offer physicians a range of products and therapies to treat a variety of vascular diseases.

Mermaid Medical's range of instruments for the peripheral vasculature includes peripheral stents, balloons, vascular closure devices and an SFA access guidewire.

## Peripheral Stents

Our peripheral stents have a hybrid cell architecture that provides strength and flexibility. The range consists of balloon expandable stents for both peripheral and renal vessels and of self-expandable stents. Both types have minimal foreshortening ( $\leq 1\%$ ) for placement accuracy.

## Peripheral Balloons

Our peripheral balloons have a fast inflation and deflation time (<10 sec), which reduces radiation exposure time. The unique catheter design of the balloons provides excellent pushability and trackability during the procedure and has a low entry profile.

## Vascular Closure

Our vascular closure range consists of a mechanical closure device and a hemostatic pad. The Obtura™ Vascular Closure Device is an effective mechanical system for femoral artery puncture site closure. Incorporated with a potent sealing system, it provides an assailable sealing with the collagen plug and efficiently designed anchor. The HemCon® OneStop™ Vascular is a hemostatic dressing for the external, temporary control of severely bleeding wounds intended for emergency use.

## Guidewires

Our SFA access guidewire, The Marsman SpeedWire™, is an innovative guidewire specifically developed for easy access to the superficial femoral artery (SFA).

### About Mermaid Medical Group

Mermaid Medical Group is a Nordic, privately owned company established in 2007 and headquartered in Copenhagen, Denmark. We develop, manufacture, and distribute medical devices to hospitals and end users across Europe, the U.S., and Asia. We specialize in solutions and devices used in interventional radiology. As a Group, we strive to be the preferred partner for manufacturers as well as hospitals and healthcare professionals.

# TABLE OF CONTENT

## Peripheral Stents

### Self Expandable Stents

- Promesa BMS ..... 4

### Balloon Expandable Peripheral / Renal Stents

- Myra BMS ..... 6
- Cogent BMS ..... 8

## Peripheral Balloons

### Drug Coated PTA Balloons

- Mozec PEB ..... 10

### PTA Balloons

- Mozec PTA 14 & 35 ..... 12

## Vascular Closure

### Vascular Closure Device

- Obtura Vascular Closure Device ..... 14

### Hemostatic Dressing

- HemCon® OneStop™ Vascular ..... 16

## Guidewires

### SFA Access Guidewire

- Marsman SpeedWire™ ..... 18



# Peripheral Stents

## Promesa BMS

### Self-expanding Nitinol Peripheral Stent System

Promesa BMS is a self-expanding nitinol peripheral stent system for use in the peripheral vasculature, which undergoes various axial, longitudinal, compression, and other relative forces. Promesa delivers impactful performance and enduring outcomes. The use of nitinol self-expanding stents may also extend to biliary usage.

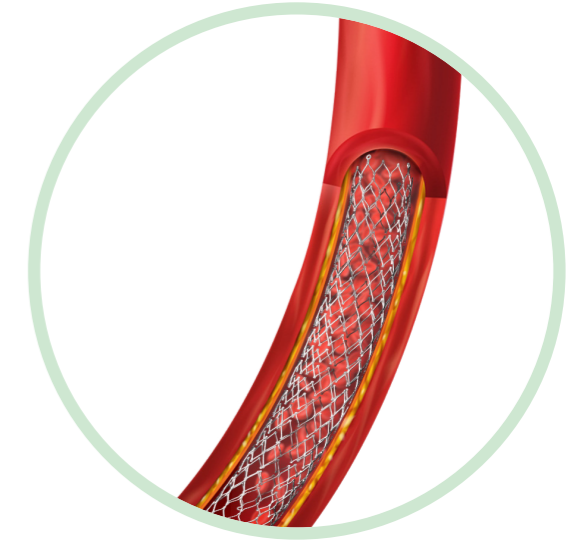
The hybrid cell architecture provides an excellent balance of flexibility, comfortability, and kink resistance for optimal wall apposition.

The platinum-iridium marker bands of Promesa facilitate precise stent positioning by maximizing visibility.

Promesa BMS is compatible with and 0.035" guidewires.

#### Features

- Ergonomic handle for controlled release
- Unique catheter design for excellent pushability and trackability
- Controlled release of stent system for precise placement and deployment

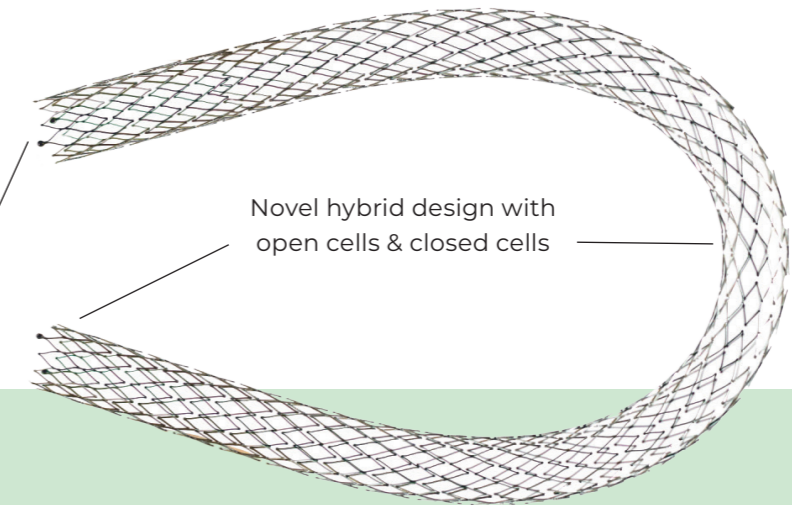


Rotatory knob for controlled release of stent



Tantalum marker for better radiopacity

Novel hybrid design with open cells & closed cells



## Myra BMS Balloon Expandable Peripheral Stent System

Myra BMS is the latest generation of Cobalt-Chromium Stents pre-mounted on an OTW balloon catheter system. The newer generation Cobalt-Chromium stent platform helps lower the strut thickness without compromising radial strength and visibility.

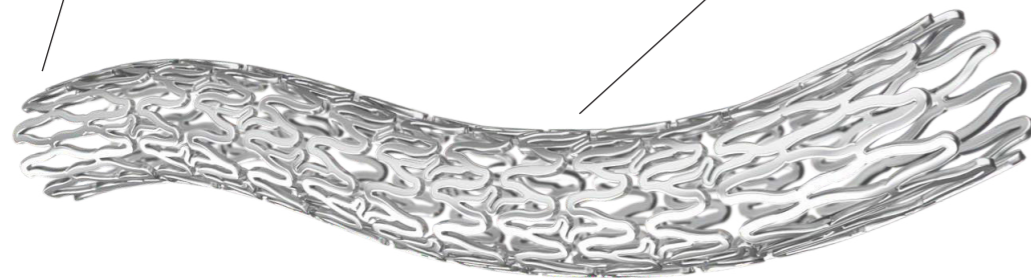
The hybrid cell architecture of Myra BMS is designed for optimal scaffolding and provides strength and flexibility to the stent.

The stent has a low strut thickness of  $120\mu$ , which minimizes vascular injuries during the procedure without compromising radial strength.

Myra BMS is compatible with 0.035" guidewires.

Closed cells at the edges  
for ostial scaffolding

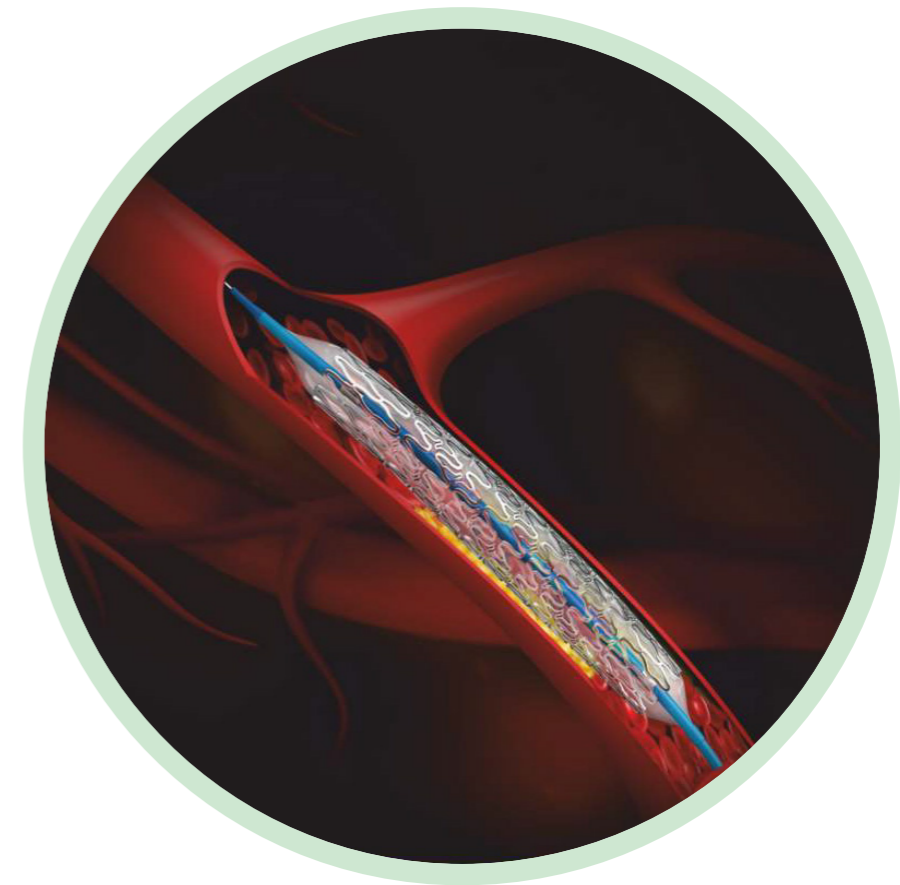
Open cells along the  
mid-segment  
for flexible navigation



Next generation Cobalt Chromium  
(L605) allows for low strut thickness  
( $120\mu\text{m}$ ) without compromising radial  
strength

### Features

- Hybrid stent architecture offers strength & flexibility
- Optimal radiopacity for clear visualization
- Laser bonded tip technology and short balloon overhang facilitates tracking and crossing of stent delivery system
- Minimal foreshortening ( $\leq 1\%$ ) for accuracy of placement



## Cogent BMS

### Balloon Expandable Renal Stent System

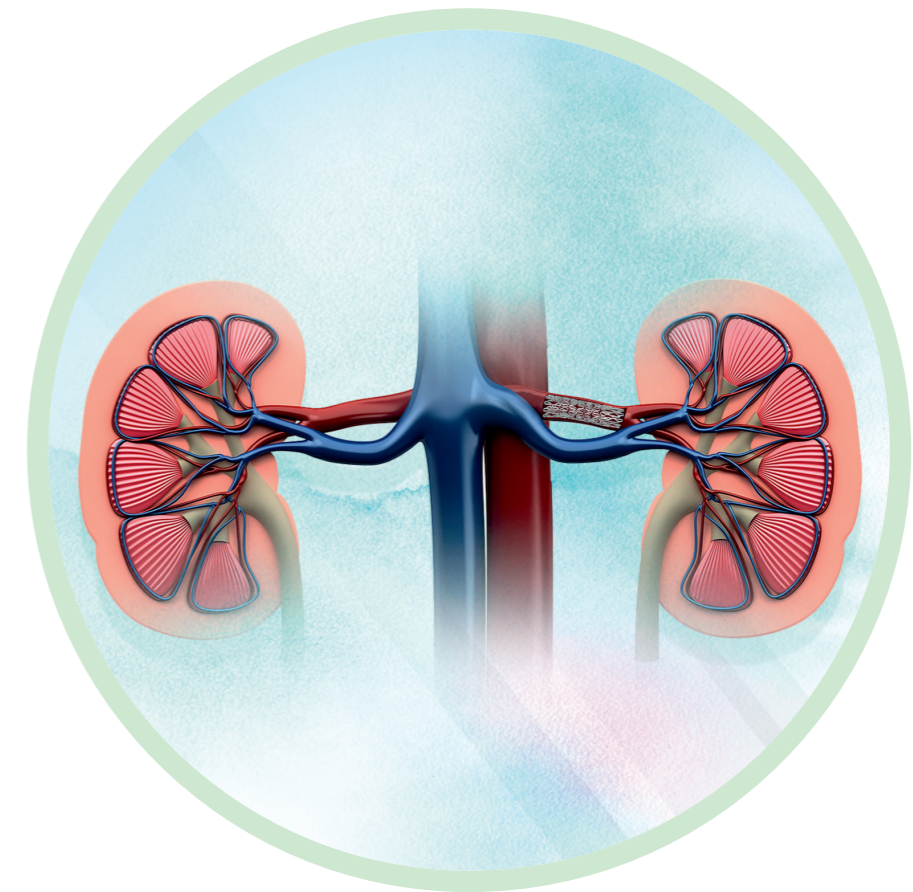
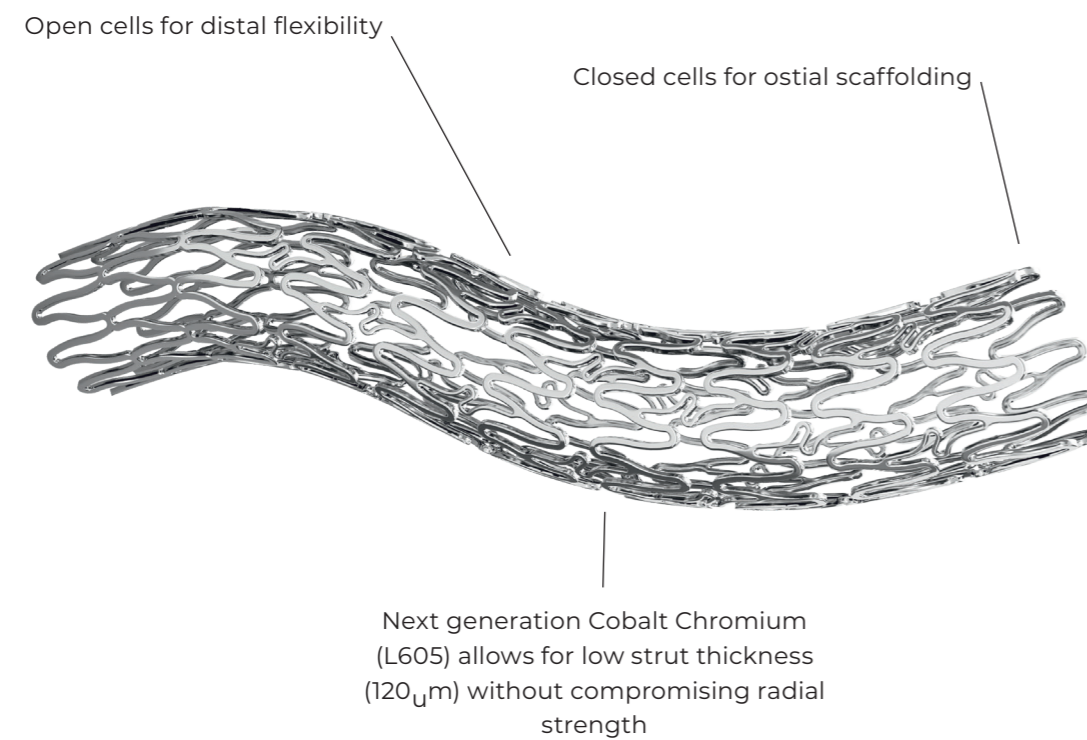
Cogent BMS is the latest generation Cobalt-Chromium Stents pre-mounted on Rx (monorail) balloon catheter system. The newer generation Cobalt-Chromium stent platform helps lower the strut thickness without compromising the radial strength and visibility.

Distal stability is ensured due to the open cell configuration, while the closed cell design offers ostial scaffold strength. This hybrid cell design of the Cogent BMS assures the optimal scaffolding and vessel wall apposition.

Cogent BMS is compatible with 0.014" guidewires.

### Features

- Hybrid stent architecture offers strength & flexibility
- Minimal foreshortening ( $\leq 1\%$ ) for accuracy of placement
- Laser bonded tip technology and short balloon overhang facilitates tracking and crossing of stent delivery system



# Peripheral Balloons

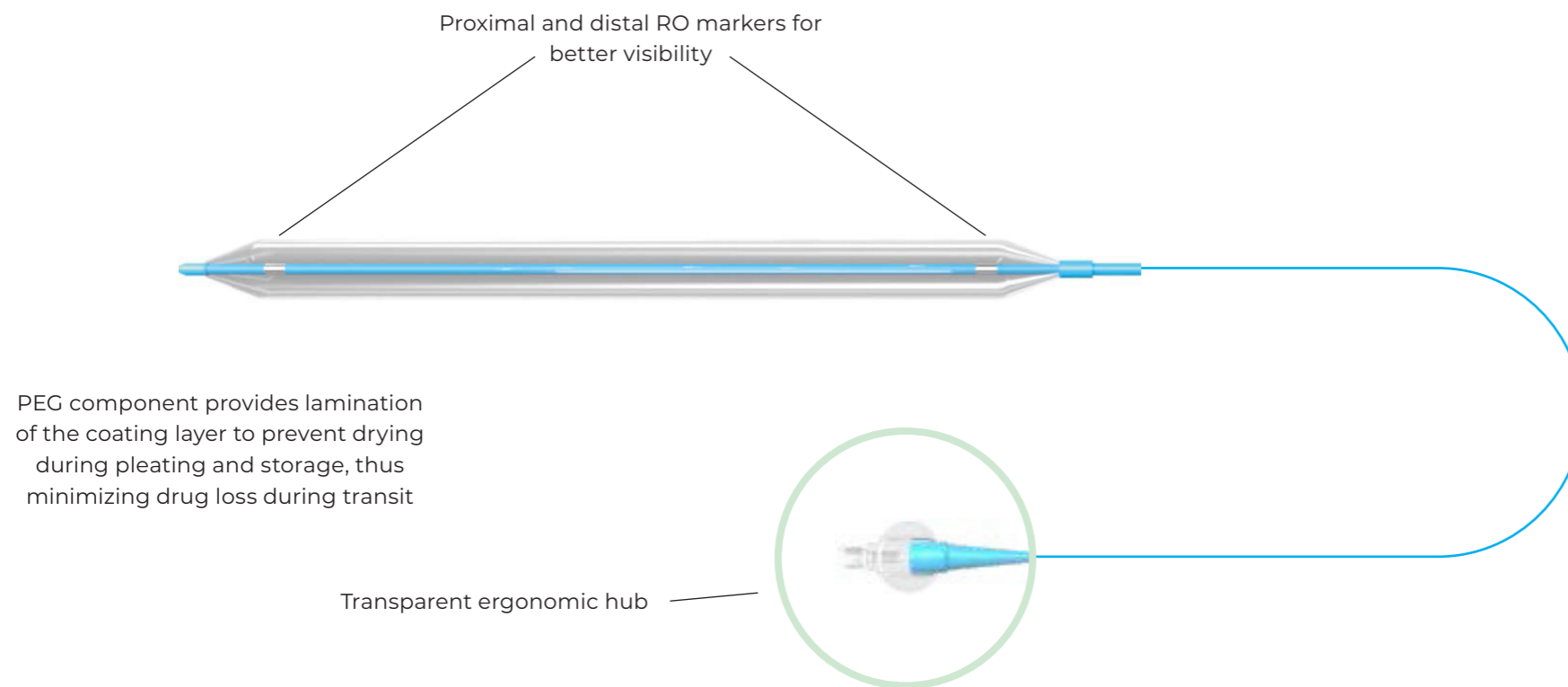
## Mozec PEB 14 & 35 Paclitaxel Eluting PTA Balloon Catheter, OTW

Mozec PEB is a paclitaxel-coated PTA balloon catheter indicated for treating peripheral vessels with obstructive disease, sub-total, or totally occluded vessel. With a drug dose of  $3\mu\text{g}/\text{mm}^2$ , Mozec PEB upgrades the efficiency to treat and manage patients with long, diffused disease up to 200mm at one go.

Mozec PEB is compatible with 0.014" and 0.035" guidewires.

### Features

- Long balloon length (200mm) reduces the need for multiple balloons and subsequent exposure time
- Securing outcomes with proprietary drug adhesion technology
- Improved efficiency – 95% of the drug transferred to vessel wall in the first 30 sec.
- Slow and sustained release of paclitaxel drug from solid to soluble phase for up to 180 days



## Mozec PTA 14 & 35

### Balloon dilatation catheter, OTW

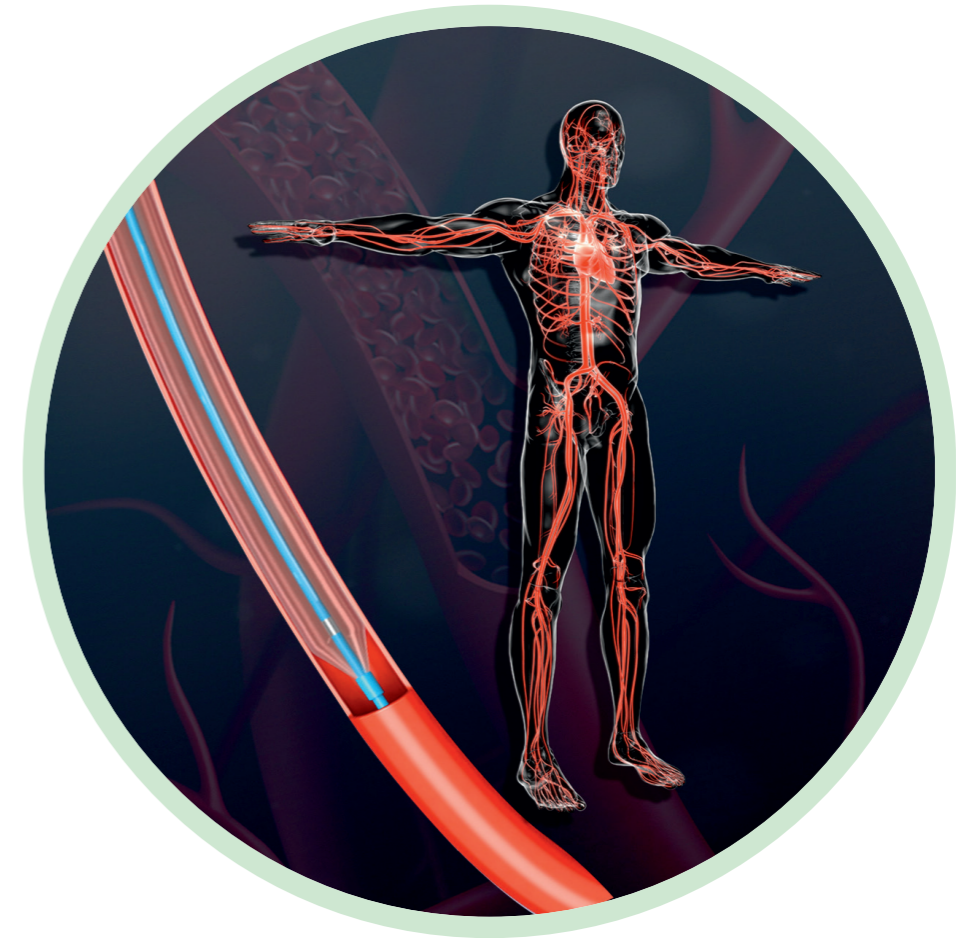
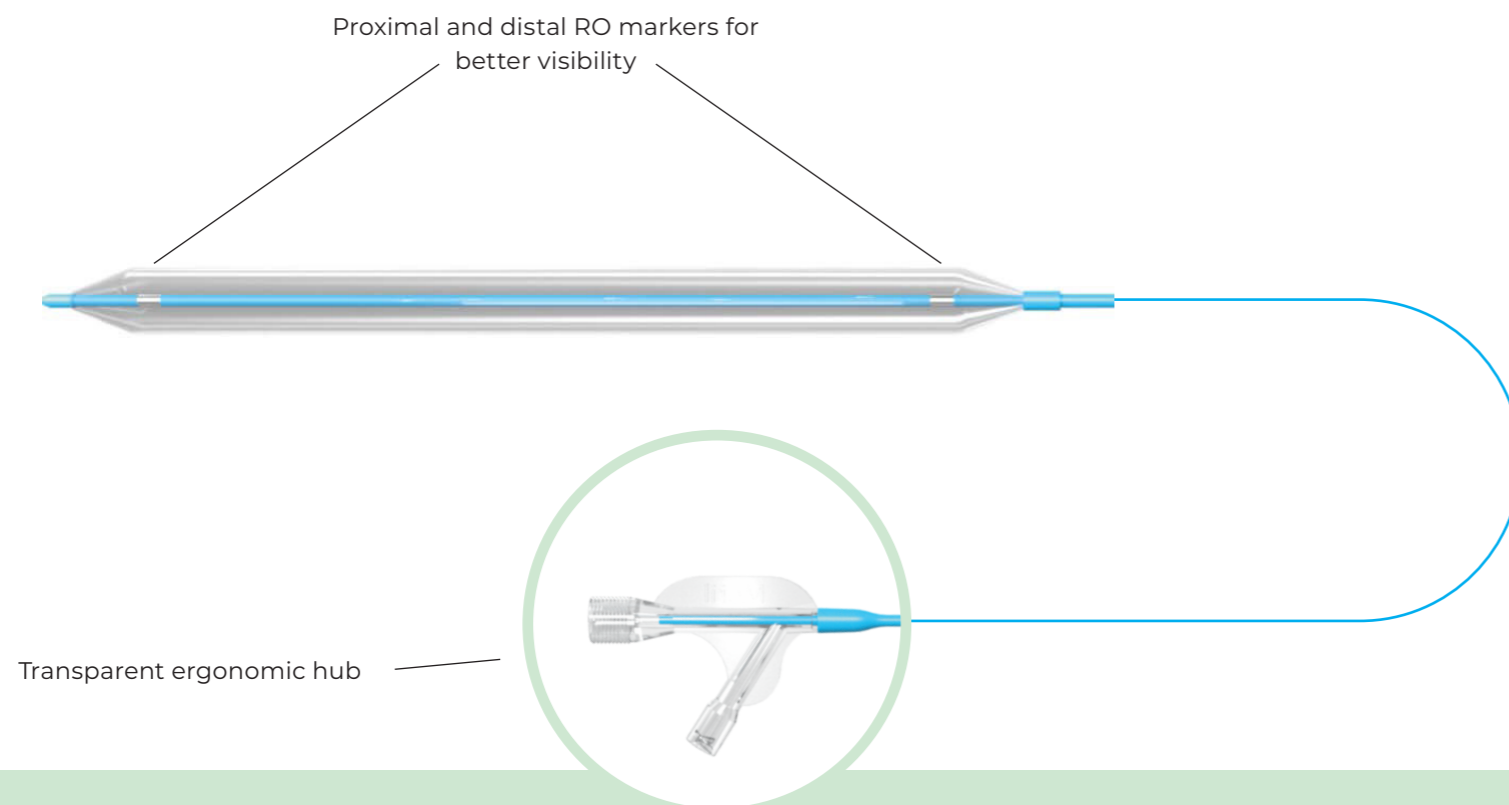
Mozec PTA is a percutaneous transluminal angioplasty balloon catheter system for treatment of vessels with obstructive disease, sub-total or total occluded peripheral vessel. It has an ultra-low 0.016" distal tip entry ensuring crossability through tight lesions.

The BioGlide™ hydrophilic coating on the balloon and shaft provides enhanced deliverability, while the superior force transmission with seamless single tube transition provides FeatherLite™ pushability.

Mozec PTA is compatible with 0.014" and 0.035" guidewires.

### Features

- Fast inflation and deflation time (<10 sec) reduces radiation exposure time
- Unique catheter design for excellent pushability and trackability
- Fatigue resistance balloon material provides better durability





# Vascular Closure

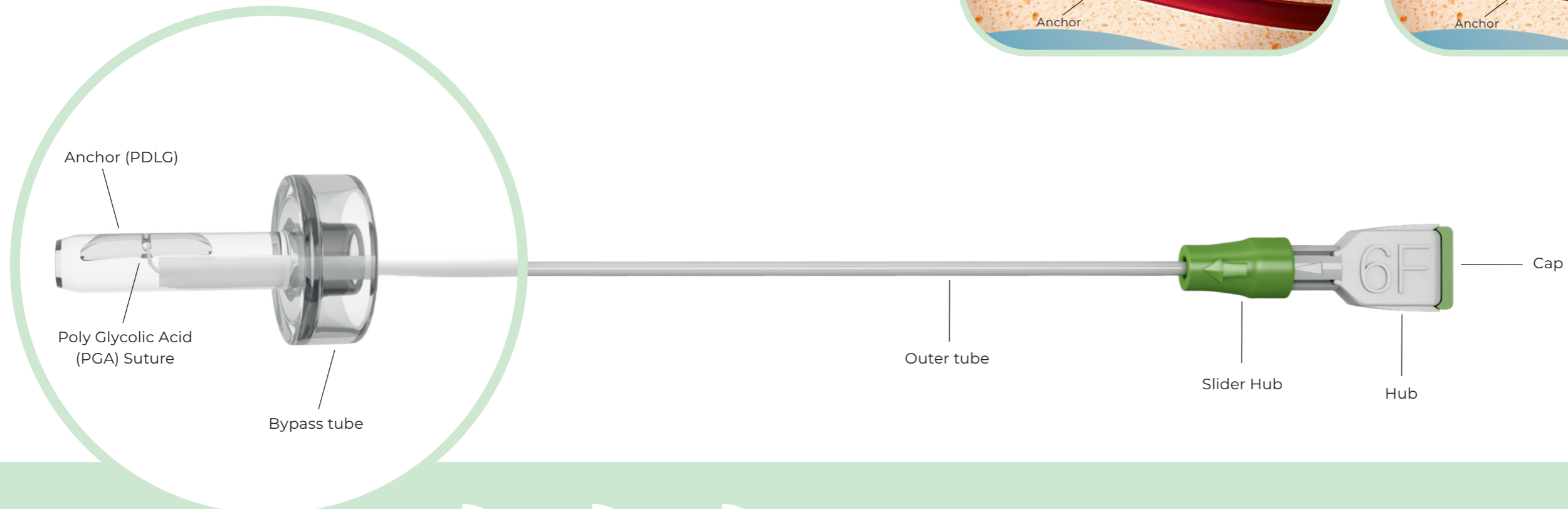
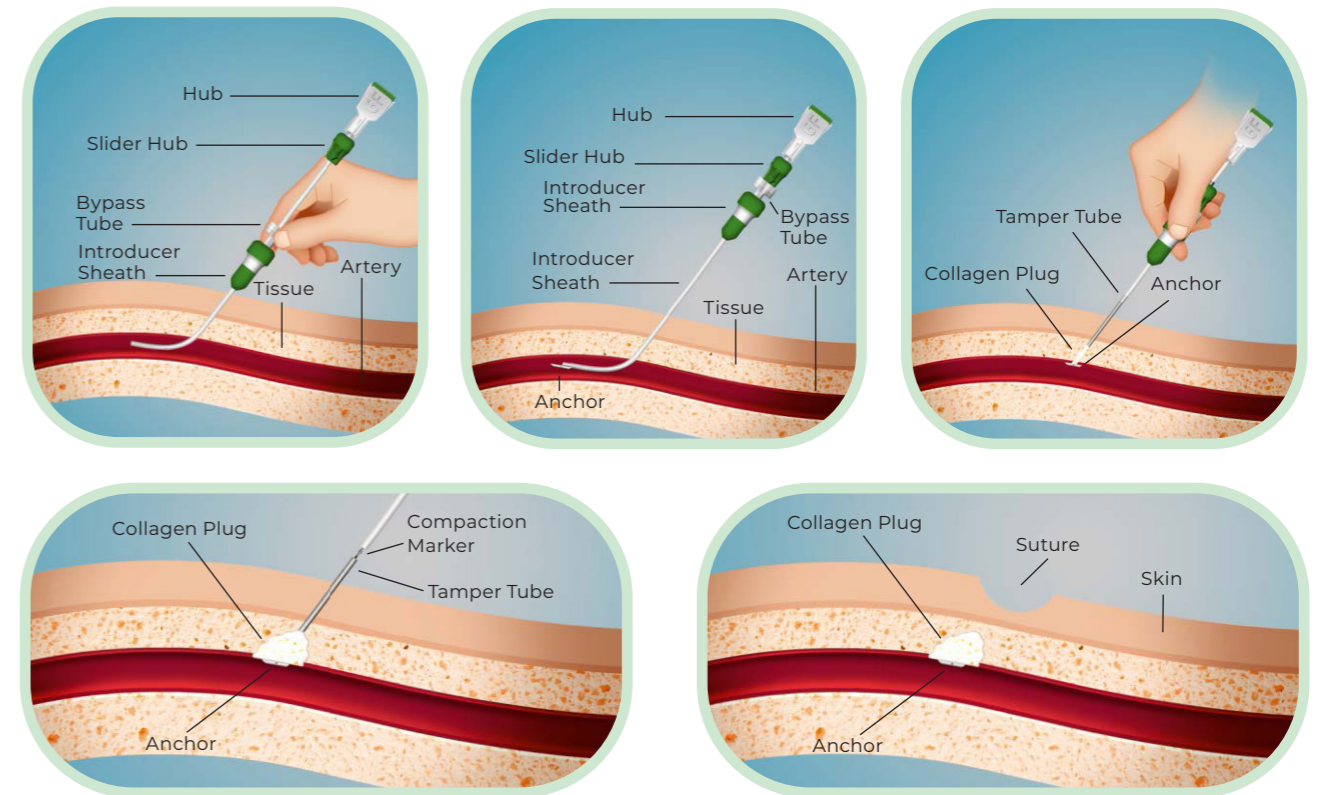
## Obtura Vascular Closure Device

Obtura is a collagen based convenient 3-step mechanical vascular closure device for effective hemostasis. The special design of Obtura is compatible with the standard existing introducer sheath used during the interventional procedures leading to less blood loss.

Obtura facilitates patient friendly sealing with the implant deployed at the puncture site which gets completely absorbed. The efficient Anchor-Collagen plug (Bovine type-I) sandwiches the arteriotomy and gives rapid hemostasis at puncture site.

The device is available in 6Fr and 8Fr.

The closure device has a unique 3-step deployment technique to reduce procedural time and blood loss.







## HemCon® OneStop™ Vascular The Blood Stops Here™

HemCon® OneStop™ Vascular is a hemostatic dressing for the external, temporary control of severely bleeding wounds intended for emergency use.

HemCon® OneStop™ Vascular also controls bleeding in patients following hemodialysis and is indicated for the control of bleeding from the skin at percutaneous needle access, vascular access and percutaneous catheter access sites.

HemCon® OneStop™ Vascular is fabricated from chitosan, a naturally occurring, biocompatible polysaccharide.

### Features

An ideal solution for safe bleeding control.

- Rapid control of bleeding
- Hemostasis in patients on anticoagulation therapy
- Provides an antibacterial barrier to MRSA, VRE, and many others<sup>1</sup>
- Maintains structural Integrity - won't crack, crumble, shed, or become saturated
- Clinically proven to reduce hold times
- Can be used as an adjunct with mechanical closure devices



<sup>1</sup> Data on file at Tricol, in vitro study.  
Testing performed by an independent, certified, contract laboratory

### Unique Chitosan-based Biotechnology

OneStop™ products are composed of chitosan, a naturally occurring, biocompatible polysaccharide derived from shrimp shells.

Chitosan's positive molecular charge attracts negatively charged red blood cells, similar to a magnet. As the red blood cells are drawn to the bandage, a clot is formed in the wound.

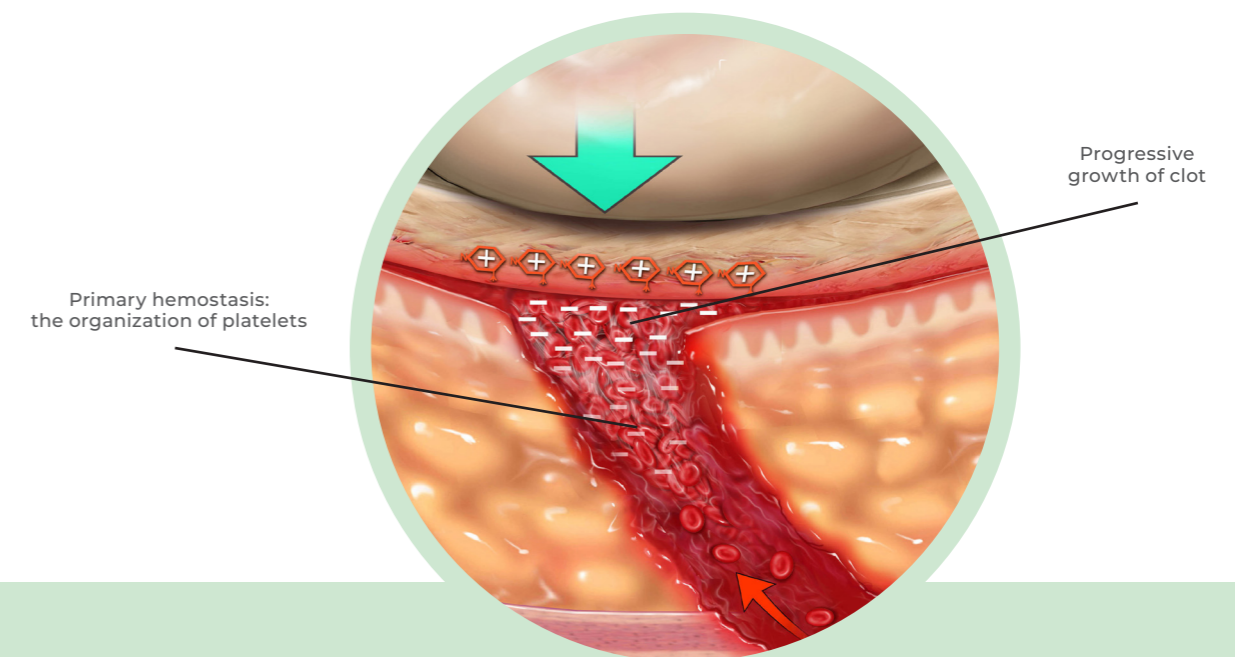
The result:

- A tight seal over the wound site
- Fast hemostasis - separate from, and supportive of, the body's natural ability to clot
- An antibacterial barrier<sup>1</sup>

### Intended Use / Indications:

The dressing is intended for the local management of bleeding wounds and to provide a barrier to bacterial penetration of the dressing in all patients and for the promotion of rapid control (hemostasis) of bleeding in patients following hemodialysis and for those on anticoagulation therapy.

The dressing is indicated for the following wounds: skin surface puncture sites, vascular procedure sites, and sites involving percutaneous catheters.



# Guidewires

## Marsman SpeedWire™

### Antegrade feed for instant speed

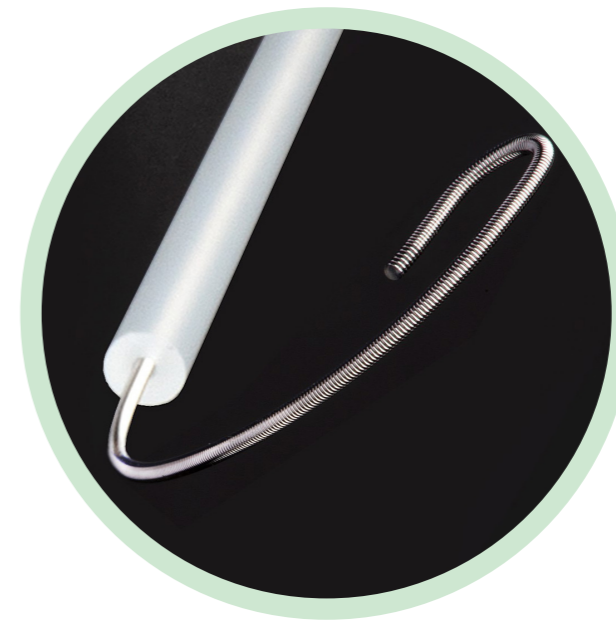
The Marsman SpeedWire™ is an innovative guidewire specifically developed for easy access to the superficial femoral artery (SFA).

Due to the unique and patented shape consisting of a J tip, deflection curve, and steering curve, access of the superficial femoral artery is easier, safer, and more efficient than with any other regular guidewire.

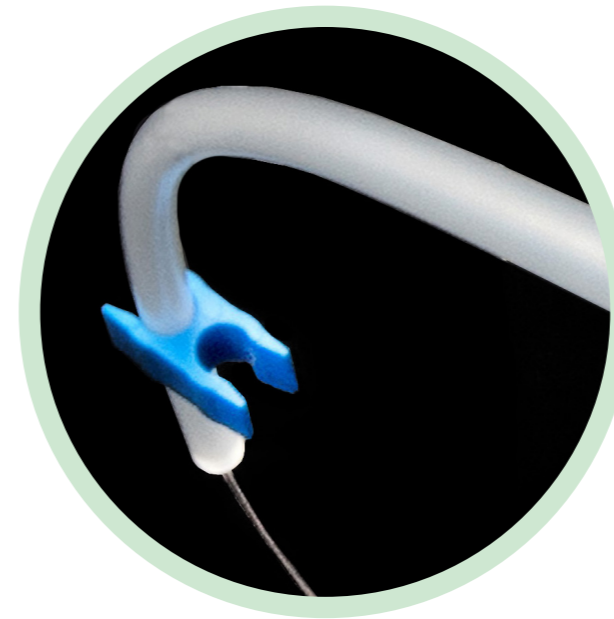
With the Marsman SpeedWire™ you can easily speed up your next antegrade femoral access procedure and do it right the first time.

### Features

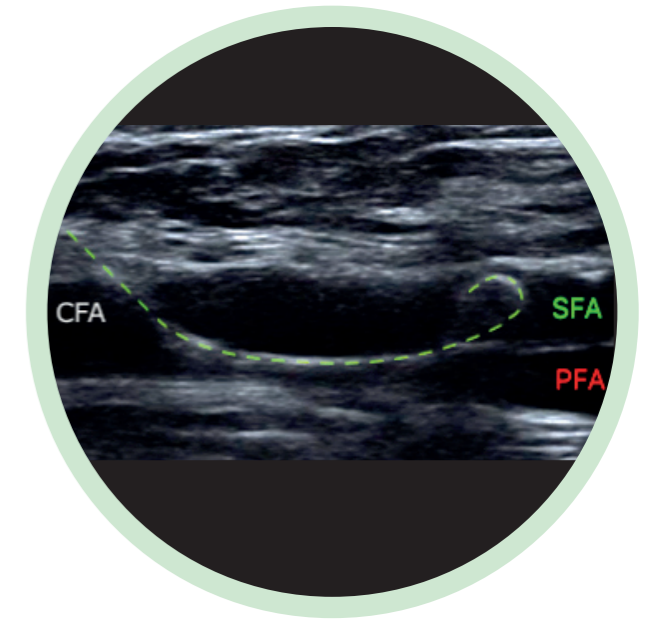
- Designed to provide easy SFA access with engineered deflection and steering curves
- Comes with introducer for easy introduction to access needle



J-tip and deflection curve



Steering Curve inside curved introducer



SFA Access

# Ordering and Specifications

## Peripheral Stents

### Promesa BMS (OTW 0.035") Usable Catheter Length: 80 cm

Diameter (mm)	Stent Length (mm)			
	30	40	60	80
7.00	PRB0700030A	PRB0700040A	PRB0700060A	PRB0700080A
8.00	PRB0800030A	PRB0800040A	PRB0800060A	PRB0800080A
9.00	PRB0900030A	PRB0900040A	PRB0900060A	PRB0900080A
10.00	PRB1000030A	PRB1000040A	PRB1000060A	PRB1000080A

### Promesa BMS (OTW 0.035") Usable Catheter Length: 80 cm

Diameter (mm)	Stent Length (mm)			
	100	120	150	180
7.00	PRB0700100A	PRB0700120A	PRB0700150A	PRB0700180A
8.00	PRB0800100A	PRB0800120A	PRB0800150A	PRB0800180A
9.00	PRB0900100A	PRB0900120A	-	-
10.00	PRB1000100A	PRB1000120A	-	-

### Promesa BMS (OTW 0.035") Usable Catheter Length: 120 cm

Diameter (mm)	Stent Length (mm)			
	30	40	60	80
5.00	PRB0500030B	PRB0500040B	PRB0500060B	PRB0500080B
6.00	PRB0600030B	PRB0600040B	PRB0600060B	PRB0600080B
7.00	PRB0700030B	PRB0700040B	PRB0700060B	PRB0700080B
8.00	PRB0800030B	PRB0800040B	PRB0800060B	PRB0800080B
9.00	PRB0900030B	PRB0900040B	PRB0900060B	PRB0900080B
10.00	PRB1000030B	PRB1000040B	PRB1000060B	PRB1000080B

### Promesa BMS (OTW 0.035") Usable Catheter Length: 120 cm

Diameter (mm)	Stent Length (mm)			
	100	120	150	180
5.00	PRB0500100B	PRB0500120B	PRB0500150B	PRB0500180B
6.00	PRB0600100B	PRB0600120B	PRB0600150B	PRB0600180B
7.00	PRB0700100B	PRB0700120B	PRB0700150B	PRB0700180B
8.00	PRB0800100B	PRB0800120B	PRB0800150B	PRB0800180B
9.00	PRB0900100B	PRB0900120B	-	-
10.00	PRB1000100B	PRB1000120B	-	-

## Peripheral Stents

### Myra BMS (OTW 0.035") Usable Catheter Length (OTW) - 80 cm

Diameter (mm)	Stent Length (mm)				
	17	27	37	47	57
5.00	MYB05017A	MYB05027A	MYB05037A	MYB05047A	MYB05057A
6.00	MYB06017A	MYB06027A	MYB06037A	MYB06047A	MYB06057A
7.00	MYB07017A	MYB07027A	MYB07037A	MYB07047A	MYB07057A
8.00	MYB08017A	MYB08027A	MYB08037A	MYB08047A	MYB08057A
9.00	MYB09017A	MYB09027A	MYB09037A	MYB09047A	MYB09057A
10.00	MYB10017A	MYB10027A	MYB10037A	MYB10047A	MYB10057A

### Myra BMS (OTW 0.035") Usable Catheter Length (OTW) - 135 cm

Diameter (mm)	Stent Length (mm)				
	100	120	150	180	180
5.00	MYB05017B	MYB05027B	MYB05037B	MYB05047B	MYB05057B
6.00	MYB06017B	MYB06027B	MYB06037B	MYB06047B	MYB06057B
7.00	MYB07017B	MYB07027B	MYB07037B	MYB07047B	MYB07057B
8.00	MYB08017B	MYB08027B	MYB08037B	MYB08047B	MYB08057B
9.00	MYB09017B	MYB09027B	MYB09037B	MYB09047B	MYB09057B
10.00	MYB10017B	MYB10027B	MYB10037B	MYB10047B	MYB10057B

### Cogent BMS (OTW 0.014") Usable Catheter Length (Rx) - 150 cm

Diameter (mm)	Stent Length (mm)		
	12	15	18
5.00	CGB05012B	CGB05015B	CGB05018B
6.00	CGB06012B	CGB06015B	CGB06018B
7.00	CGB07012B	CGB07015B	CGB07018B

## Peripheral Balloons

80 cm = MO14P020040A  
135 cm = MO14P020040B

### MOZEC PEB PTA 14 (OTW 0.014") (Drug Coated): Usable Catheter Length: 80 cm \*A & 135 cm \*B

Diameter (mm)	Stent Length (mm)						
	40 MM	60 MM	80 MM	120 MM	150 MM	200 MM	250 MM
2 mm	MO14P020040*	MO14P020060*	MO14P020080*	MO14P020120*	MO14P020150*	MO14P020200*	MO14P020250*
2.5 mm	MO14P025040*	MO14P025060*	MO14P025080*	MO14P025120*	MO14P025150*	MO14P025200*	MO14P025250*
3 mm	MO14P030040*	MO14P030060*	MO14P030080*	MO14P030120*	MO14P030150*	MO14P030200*	MO14P030250*
3.5 mm	MO14P035040*	MO14P035060*	MO14P035080*	MO14P035120*	MO14P035150*	MO14P035200*	MO14P035250*
4 mm	MO14P040040*	MO14P040060*	MO14P040080*	MO14P040120*	MO14P040150*	MO14P040200*	MO14P040250*



# Ordering and Specifications

## Peripheral Balloons

80 cm = MO35P030040A  
135 cm = MO35P030040B

### MOZEC PEB PTA 35 (OTW 0.035") (Drug Coated): Usable Catheter Length: 80 cm \*A & 135 cm \*B

Dia- meter (mm)	Stent Length (mm)							
	40 MM	60 MM	80 MM	120 MM	150 MM	200 MM	250 MM	300 MM
3 mm	MO35P030040*	MO35P030060*	MO35P030080*	MO35P030120*	MO35P030150*	MO35P030200*	MO35P030250*	MO35P030300*
4 mm	MO35P040040*	MO35P040060*	MO35P040080*	MO35P040120*	MO35P040150*	MO35P040200*	MO35P040250*	MO35P040300*
5 mm	MO35P050040*	MO35P050060*	MO35P050080*	MO35P050120*	MO35P050150*	MO35P050200*	MO35P050250*	MO35P050300*
6 mm	MO35P060040*	MO35P060060*	MO35P060080*	MO35P060120*	MO35P060150*	MO35P060200*	MO35P060250*	MO35P060300*
7 mm	MO35P070040*	MO35P070060*	MO35P070080*	MO35P070120*	MO35P070150*			
8 mm	MO35P080040*	MO35P080060*	MO35P080080*	MO35P080120*	MO35P080150*			

### Mozec™ PTA (OTW 0.014") Usable Catheter Length 120 cm

Dia- meter (mm)	Balloon Length (mm)								
	30	40	50	60	80	120	150	200	250
1.50	MO14015030A	MO14015040A	MO14015050A	MO14015060A	MO14015080A	-	-	-	-
2.00	MO14020030A	MO14020040A	MO14020050A	MO14020060A	MO14020080A	MO14020120A	MO14020150A	MO14020200A	MO14020250A
2.50	MO14025030A	MO14025040A	MO14025050A	MO14025060A	MO14025080A	MO14025120A	MO14025150A	MO14025200A	MO14025250A
3.00	MO14030030A	MO14030040A	MO14030050A	MO14030060A	MO14030080A	MO14030120A	MO14030150A	MO14030200A	MO14030250A
3.50	MO14035030A	MO14035040A	MO14035050A	MO14035060A	MO14035080A	MO14035120A	MO14035150A	MO14035200A	MO14035250A
4.00	MO14040030A	MO14040040A	MO14040050A	MO14040060A	MO14040080A	MO14040120A	MO14040150A	MO14040200A	MO14040250A
5.00	MO14050030A	MO14050040A	MO14050050A	MO14050060A	MO14050080A	MO14050120A	MO14050150A	MO14050200A	MO14050250A

### Mozec™ PTA (OTW 0.014") Usable Catheter Length 150 cm

Dia- meter (mm)	Balloon Length (mm)								
	30	40	50	60	80	120	150	200	250
1.50	MO14015030B	MO14015040B	MO14015050B	MO14015060B	MO14015080B	-	-	-	-
2.00	MO14020030B	MO14020040B	MO14020050B	MO14020060B	MO14020080B	MO14020120B	MO14020150B	MO14020200B	MO14020250B
2.50	MO14025030B	MO14025040B	MO14025050B	MO14025060B	MO14025080B	MO14025120B	MO14025150B	MO14025200B	MO14025250B
3.00	MO14030030B	MO14030040B	MO14030050B	MO14030060B	MO14030080B	MO14030120B	MO14030150B	MO14030200B	MO14030250B
3.50	MO14035030B	MO14035040B	MO14035050B	MO14035060B	MO14035080B	MO14035120B	MO14035150B	MO14035200B	MO14035250B
4.00	MO14040030B	MO14040040B	MO14040050B	MO14040060B	MO14040080B	MO14040120B	MO14040150B	MO14040200B	MO14040250B
5.00	MO14050030B	MO14050040B	MO14050050B	MO14050060B	MO14050080B	MO14050120B	MO14050150B	MO14050200B	MO14050250B

## Peripheral Balloons

80 cm = MO35030020A  
135 cm = MO35030020B

### Mozec™ PTA (OTW 0.035") Usable Catheter Length 80 cm \*A & 135 cm \*B

Dia- meter (mm)	Balloon Length (mm)					
	20	30	40	50	60	80
3.00	MO35030020*	MO35030030*	MO35030040*	MO35030050*	MO35030060*	MO35030080*
4.00	MO35040020*	MO35040030*	MO35040040*	MO35040050*	MO35040060*	MO35040080*
5.00	MO35050020*	MO35050030*	MO35050040*	MO35050050*	MO35050060*	MO35050080*
6.00	MO35060020*	MO35060030*	MO35060040*	MO35060050*	MO35060060*	MO35060080*
7.00	MO35070020*	MO35070030*	MO35070040*	MO35070050*	MO35070060*	MO35070080*
8.00	MO35080020*	MO35080030*	MO35080040*	MO35080050*	MO35080060*	MO35080080*
9.00	MO35090020*	MO35090030*	MO35090040*	MO35090050*	MO35090060*	MO35090080*
10.00	MO35100020*	MO35100030*	MO35100040*	MO35100050*	MO35100060*	MO35100080*
12.00	MO35120020*	MO35120030*	MO35120040*	MO35120050*	MO35120060*	MO35120080*
14.00	MO35140020*	MO35140030*	MO35140040*	MO35140050*	MO35140060*	MO35140080*

### Mozec™ PTA (OTW 0.035") Usable Catheter Length 80 cm \*A & 135 cm \*B

Dia- meter (mm)	Balloon Length (mm)				
	120	150	200	250	300
3.00	MO35030120*	MO35030150*	MO35030200*	MO35030250*	MO35030300*
4.00	MO35040120*	MO35040150*	MO35040200*	MO35040250*	MO35040300*
5.00	MO35050120*	MO35050150*	MO35050200*	MO35050250*	MO35050300*
6.00	MO35060120*	MO35060150*	MO35060200*	MO35060250*	MO35060300*
7.00	MO35070120*	MO35070150*	-	-	-
8.00	MO35080120*	MO35080150*	-	-	-

## Vascular Closure

### Obtura Vascular Closure Device

Ref nr	Specifications	Qty/box
OBT6F	6Fr device compatible with 6Fr & 7Fr Introducer Sheath	1
OBT8F	8Fr device compatible with 8F & 9Fr Introducer Sheath	1

### HemCon® OneStop™

Ref nr	Specifications	Qty/box
1102	HemCon® OneStop™ 4 cm x 4 cm	10
1103	HemCon® OneStop™ 5 cm x 5 cm	10

## Guidewires

### Marsman SpeedWire™

Ref nr	Specifications	Qty/box
48012545	Marsman SpeedWire® 0,035/70cm	10





**mermaid** medical®

**NORDICS**

Frydensbergvej 25 - DK-3660 Stenløse

customer@mermaidmedical.com

Phone: +45 47 10 85 70

Fax: +45 47 10 85 71

MM 01-6000-01 ENG Rev.01.